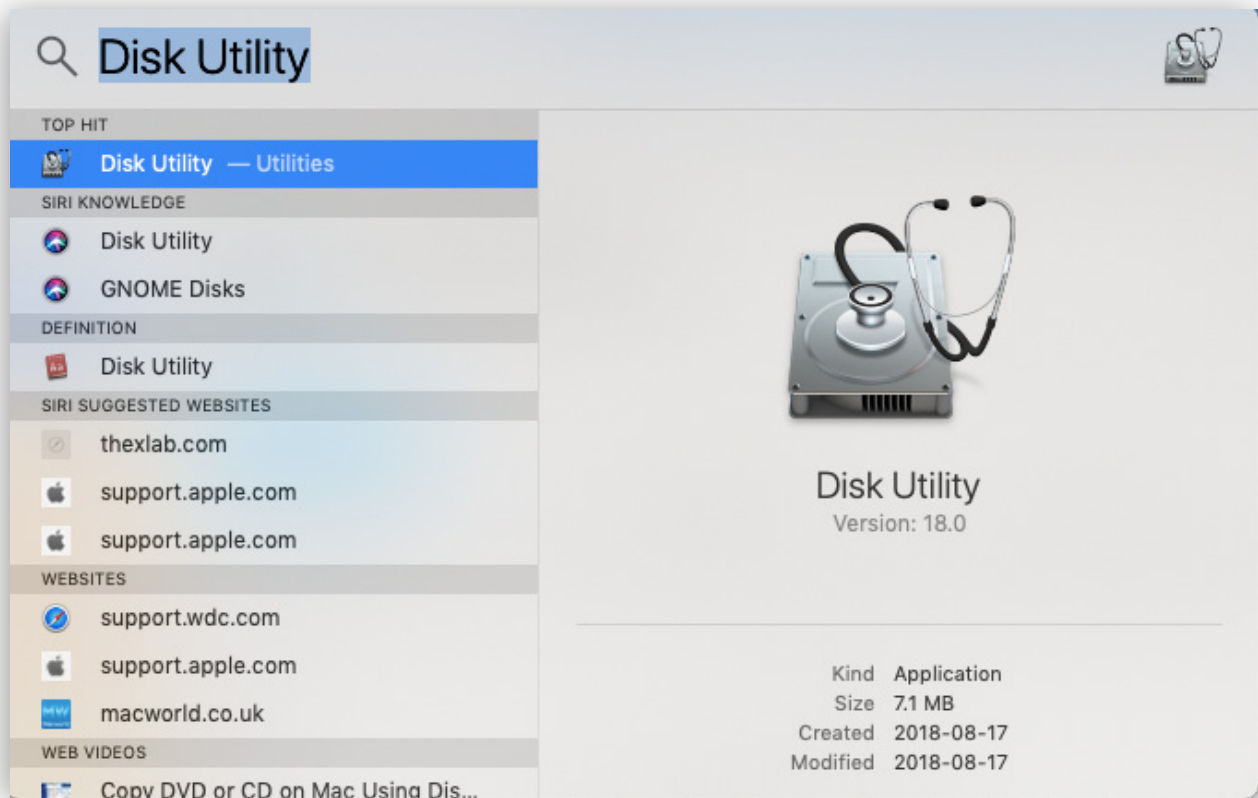
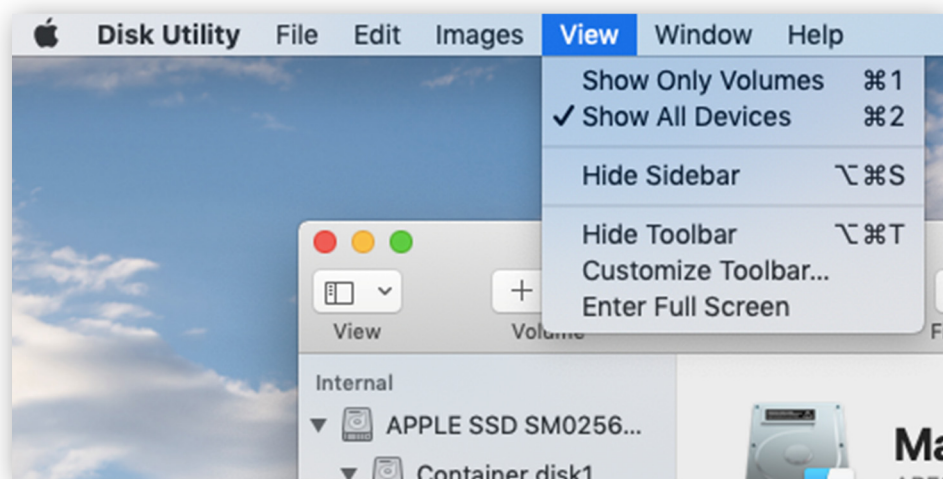


# Encrypting portable storage (Mac OSX 10.14 or higher)

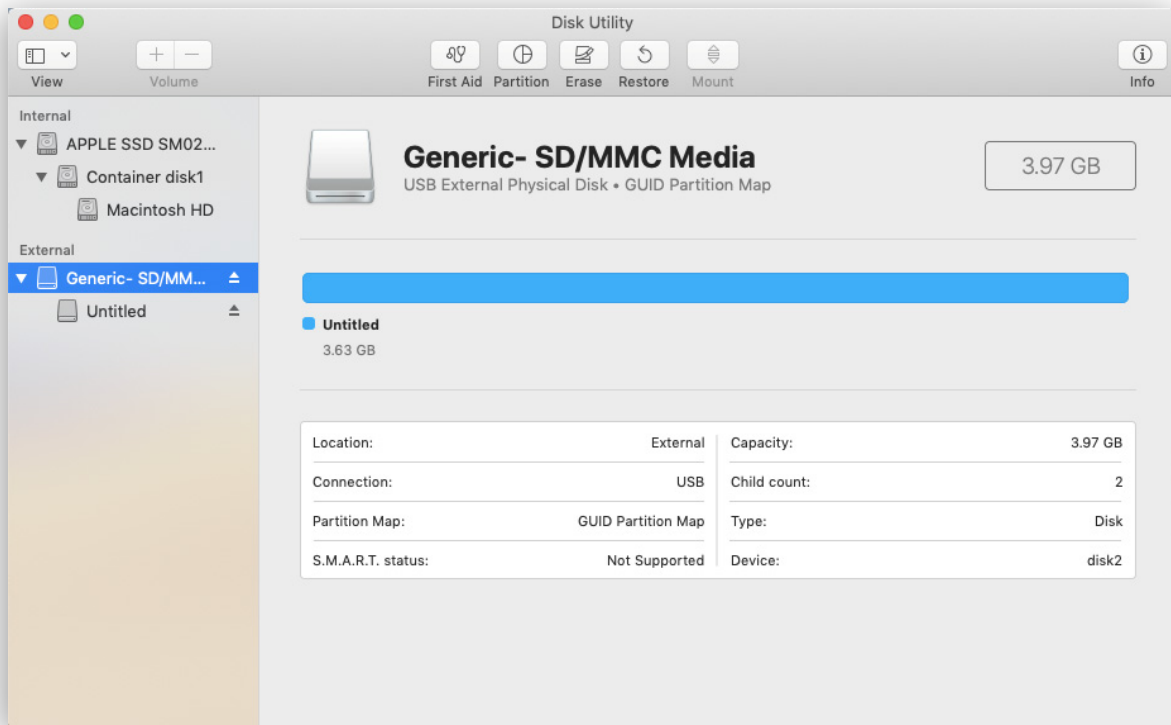
1. Plug in your portable device (ex. USB key) – **WARNING: THIS PROCESS WILL ERASE ALL DATA FROM YOUR STORAGE DEVICE SO COPY THOSE FILES TO ANOTHER LOCATION**
2. Open Disk Utility by clicking on **Spotlight**(magnifying glass) and type **Disk Utility**. Click on the icon as shown in the screenshot below.



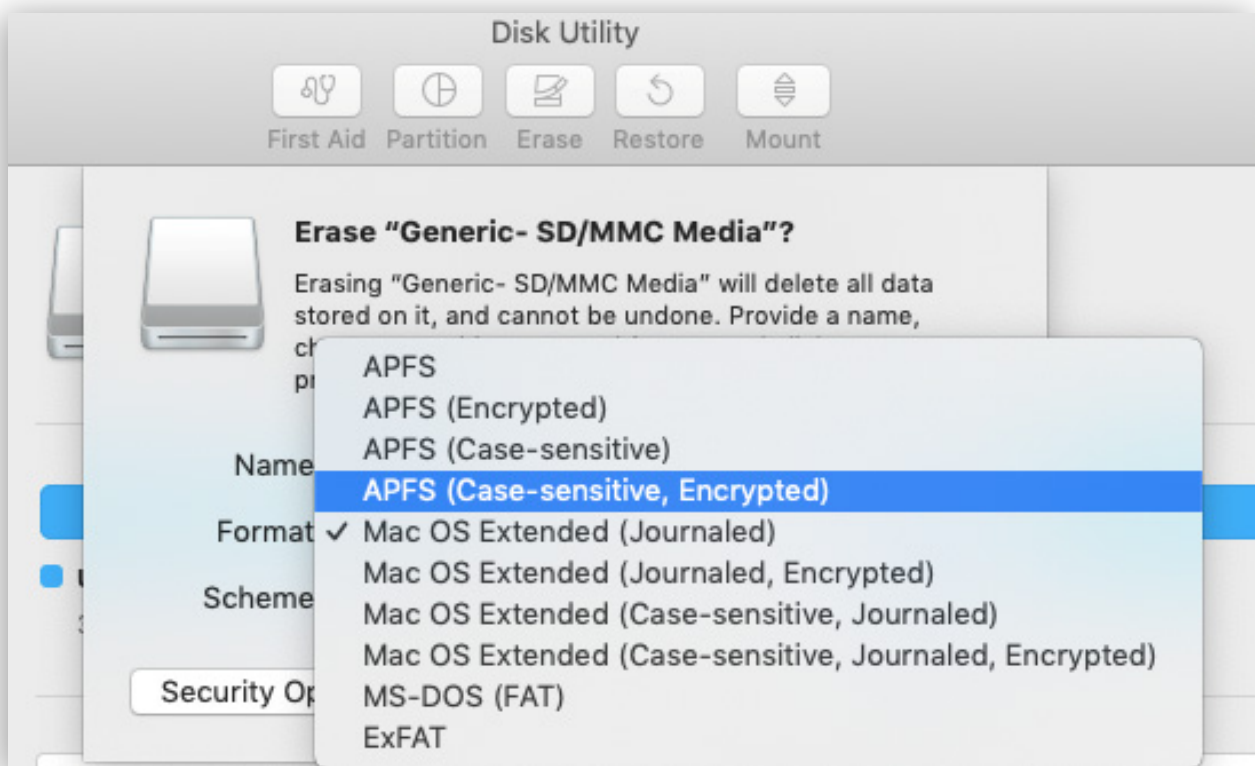
3. Select the View menu and click **Show All Devices**.



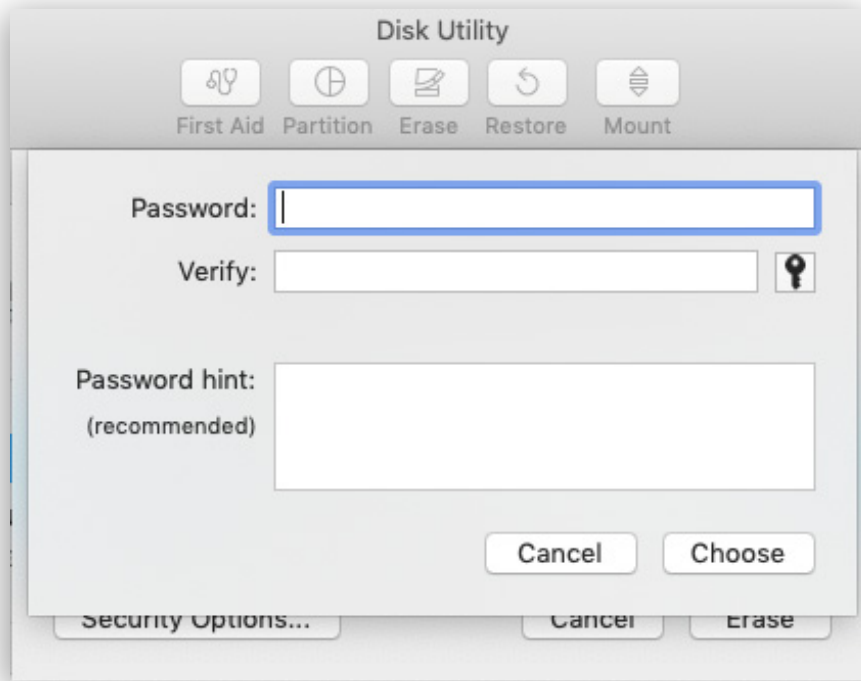
- Click the upper most container on your External drive. It will likely be the name of the manufacturer of the drive(ex. Generic-SD/MM below not the "Untitled" label).



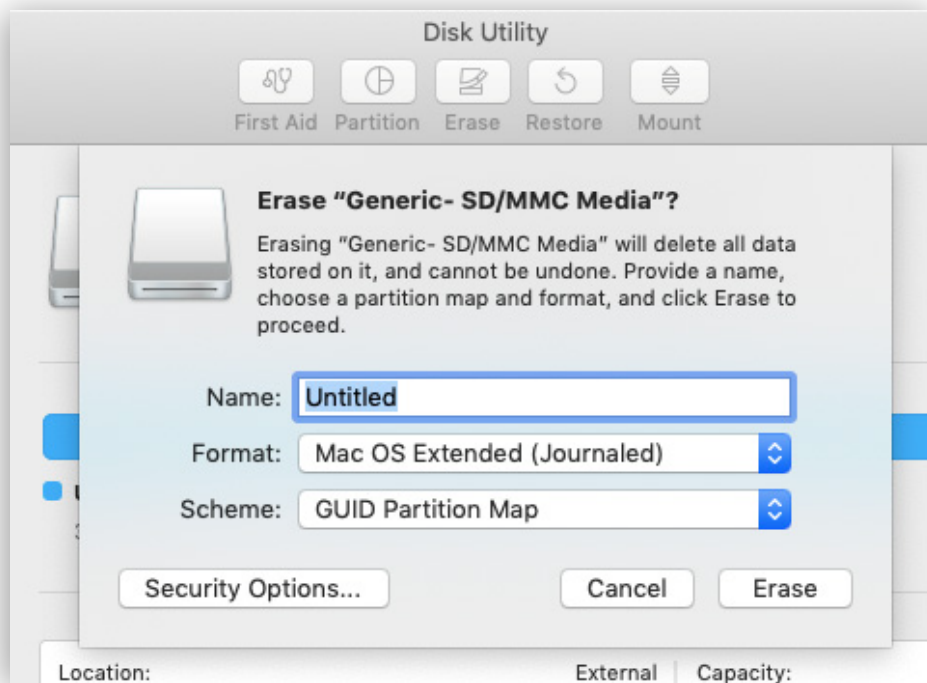
- Click Erase. It will now ask you what format you want. You can choose any of the options but make sure it says **Encrypted**. APFS (Encrypted) is the newest and fastest option.



- A new window will appear asking you to create a password. Type the password you want to use for the drive here.



- Give your drive a name and click **Erase**. **WARNING: THIS PROCESS WILL ERASE ALL DATA FROM YOUR STORAGE DEVICE SO MAKE SURE YOUR FILES ARE COPIED ELSEWHERE**



- Once the process is finished you can copy any files you want to the drive.